



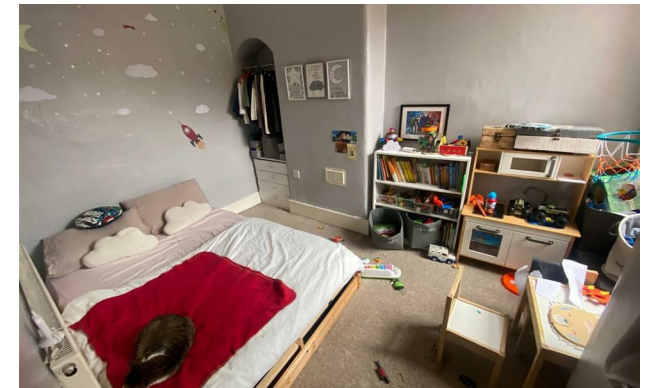
jordan fishwick

FALLOWFIELD
Alexandra Avenue



Alexandra Avenue, Fallowfield, M14 7JS

£200,000



The Property

A garden fronted mid-terraced property, located within a popular cul-de-sac offering spacious accommodation for the couple or first time buyer. Gas central heating and double glazing are both installed and the accommodation comprises: Entrance hall, lounge, dining room, fitted kitchen. To the first floor there are two double bedrooms and a bathroom with a three piece white suite with over bath shower. An enclosed courtyard garden to the rear of the property completes the impressive specification. Conveniently placed for local schools, Manchester City centre and the Universities. Viewing of this fine home is most highly recommended.

Directions

M14 7JS



- Garden fronted terrace property
- Two separate reception rooms
- Enclosed courtyard garden to rear
- Cul-de-sac location
- Well placed for Manchester City centre
- Excellent transport links
- Double glazed & gas central heating

Postcode - M14 7JS

EPC Rating - D

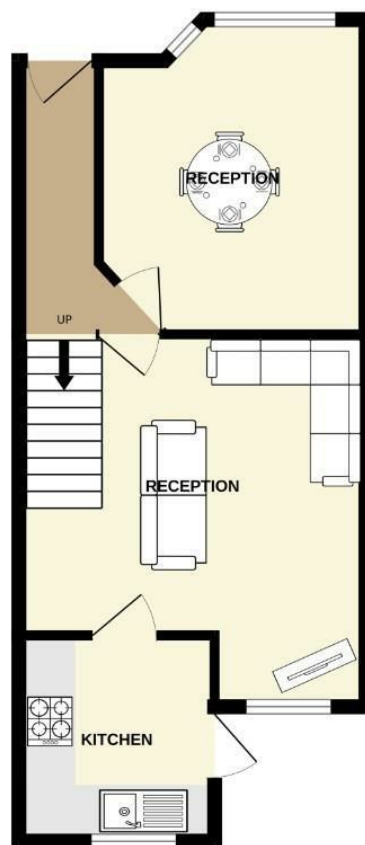
Floor Area - 762.00 sq ft

Local Authority - Manchester City Council

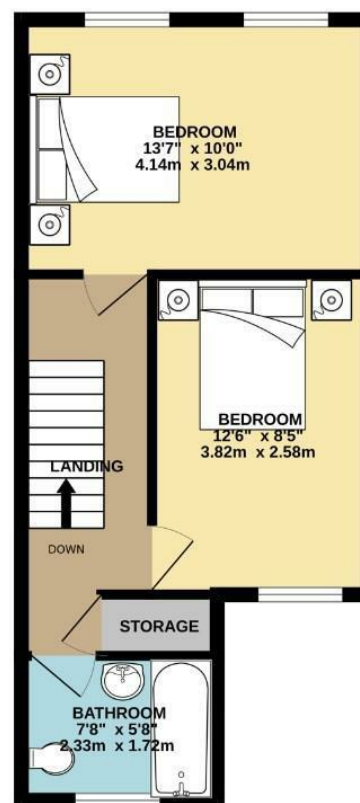
Council Tax - A



GROUND FLOOR
395 sq.ft. (36.7 sq.m.) approx.



1ST FLOOR
367 sq.ft. (34.1 sq.m.) approx.



TOTAL FLOOR AREA: 762 sq.ft. (70.8 sq.m.) approx.
Measurements are approximate. Not to scale. Illustrative purposes only.
Made with Metrepaix 6/2025



These particulars are believed to be accurate but they are not guaranteed and do not form a contract. Neither Jordan Fishwick nor the vendor or lessor accept any responsibility in respect of these particulars, which are not intended to be statements or representations of fact and any intending purchaser or lessee must satisfy himself by inspection or otherwise as to the correctness of each of the statements contained in these particulars. Any floorplans on this brochure are for illustrative purposes only and are not necessarily to scale.

Offices also at: Wilmslow, Macclesfield, Hale, Sale, Chorlton, Glossop, Manchester & Salford

757-759 Wilmslow Road, Didsbury Village, Manchester

0161 445 4480

didsbury@jordanfishwick.co.uk
www.jordanfishwick.co.uk